

PAINT BRUSHES

Robert Simmons

All prices shown are
25% off list price!

EXPRESSIONS BRUSHES

Unique "balanced handle" provides comfortable grip and reduces fatigue. Brush composed of blended mixture of varying thicknesses and types of synthetic filaments. This sable-like mixture allows for enhanced control. Recommended for all media except enamel.



#RS-E47 — Fan

Size	Price
2	\$7.20
3	\$8.08



#RS-E50 — Script

Size	Price	Size	Price
0	\$4.63	2	\$5.10
1	\$4.79	3	\$5.33



#RS-E51 — Liner

Size	Price	Size	Price	Size	Price
10/0	\$4.16	0	\$4.63	2	\$5.10
2/0	\$4.39	1	\$4.76		



#RS-E52 — Oval Mop

Size	Price	Size	Price
1/4	\$8.31	1/2	\$9.63
3/8	\$8.48	3/4	\$13.88



#RS-E57 — Angle Shader

Size	Price	Size	Price
1/8	\$5.57	3/8	\$8.24
1/4	\$7.68	1/2	\$9.96
5/8	\$11.37	3/4	\$13.88



#RS-E60 — Flat Shader

Size	Price	Size	Price	Size	Price
		4	\$5.81	10	\$9.49
1	\$4.63	6	\$6.60	12	\$9.64
2	\$5.10	8	\$8.08		



#RS-E60S — Chisel Blender

Size	Price
4	\$5.89
6	\$6.58
8	\$8.31



#RS-E67 — Filbert

Size	Price	Size	Price	Size	Price
2	\$5.33	6	\$7.20	10	\$9.34
4	\$6.11	8	\$8.06		



#RS-E75 — Color Comb

Color Comb for textured effects, feathery detailing, grass, hair

Size	Price
1/4	\$11.21
1/2	\$12.38
3/4	\$18.00

#RS-E85 — Round

Size	Price	Size	Price	Size	Price
3/0	\$4.16	1	\$4.76	4	\$5.81
2/0	\$4.32	2	\$4.76	5	\$6.43
0	\$4.55	3	\$5.26	6	\$7.21



TOLEMASTER BRUSHES were discontinued by Robert Simmons. See clearance page of on line Shopping Cart to view brushes that are still available.

WWW.HUMMUL.COM

BRUSH USES: ROUNDS, BRIGHTS, FLATS, & FILBERTS

The soft, responsive round is at home with oil, acrylic and waterbase pigments, but the flats, brights and filberts are especially for thicker viscosity painting as with acrylic and oil. The round is best used for responsive line quality. The flat, with its square end and medium-to-long length is useful for bold, sweeping strokes as well as defined edge work. Brights, also with squared end, are shorter and great for short, controlled strokes. Filberts, shaped like a bird's feather, were developed to simulate the heavy-loading characteristics of a well-worn flat brush.

VERMICULATION FELT TIP PEN by Staedtler

A felt tip pen that won't "bleed" or "smear."

#S-313	Superfine Tip (Black)	\$1.99
#S-313-B	Superfine Tip (Brown)	\$1.99



PALETTE KNIFE

Flexible spring, tapering at tip. Handy tip shape for working with wood filler to set eyes in decoys.

Order #MW-3633 \$2.95



PAINT BRUSHES



LOEW-CORNELL GOLDEN TAKLON BRUSHES

Golden Taklon brushes have all the characteristics of pure red sable. Crafted of a new synthetic filament that performs like sable with spring, point and edge. Specify order number and size.

**ALL PRICES SHOWN ARE
20% OFF LIST PRICE!**

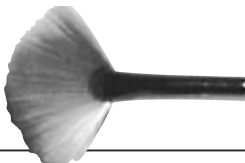
#LC7000 — Round

Size	Price	Size	Price	Size	Price
00	\$3.79	2	\$4.14	6	\$5.53
0	\$3.87	3	\$4.46	8	\$7.18
1	\$3.95	4	\$4.75		



#LC7200 — Fan

Size	Price
2	\$6.54
4	\$7.18



#LC7300 — Shader

Size	Price	Size	Price
6	\$5.23	10	\$6.67
8	\$5.79	12	\$7.50



#LC7050 — Script Liner

Size	Price	Size	Price
2	\$4.06	4	\$4.70



#LC7400 — Angular Shader

Size	Price
1/8"	\$4.27
1/4"	\$5.98



#LC7500 — Filbert

Size	Price	Size	Price
4	\$5.47	8	\$6.99
6	\$6.22	10	\$8.83



#LC7550 — Wash

Size	Price
1"	\$15.71



LOEW-CORNELL GOLDEN TAKLON MINI BRUSHES

Excellent for the finest detail.

#LC7000 — Round

Size 18/0 \$ 4.03



#LC7350 — Liner

Size 18/0 \$ 4.03



#LC7300 — Shader

Size 10/0 \$ 4.03



#LC7200 — Fan

Size 2/0 \$ 6.46



#LC7670 — Tight Spot

Size 10/0 \$ 4.62



(Brushes not included)

BRUSH BASIN

Soak, shape, store and wipe brushes as you work. Accepts any solvent. Suspends bristles in solvent, so they don't bend.

Grooves in the bottom aid in cleaning brushes.

(6 1/2" x 6 1/2" x 3 1/2")

#V-0324 \$5.10



#LC7800 - Dagger Striper

Size 1/8"\$7.10

Size 1/4"\$7.95

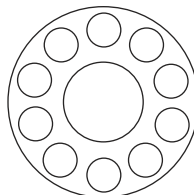


Silver Brush Triangle Point

#SB2515MD\$13.78



#SB2515XSM\$11.15



PAINT TRAY

Plastic palette with 10 wells. Use for oils, acrylics or water-colors. Can be cleaned and reused.

Order #LC941 \$1.35 ea.



COLOR WHEEL

A color mixing guide and harmony wheel.

Order #M-917\$5.69

Jo Sonja's Brush Soap

8.4 oz.

Order #JS-3860\$5.50



PAINTS & MEDIUMS

JO-SONJA GESSO

8 oz jar
Order # JS-711 White\$5.65

16.9 oz jar
Order # JS-71116 White\$7.95



LIQUITEX INTERFERENCE COLORS

Each color refracts its complementary color, giving an unsurpassed iridescent quality.

2 oz. Bottles \$8.25 ea.

Order #	Color
LQ-04227	Interference Blue
LQ-08327	Interference Gold
LQ-04427	Interference Green
LQ-03627	Interference Orange
LQ-03827	Interference Red
LQ-04027	Interference Violet



LIQUITEX WHITE GESSO

A fast-drying white acrylic primer for use as a base under virtually any type of paint. (Recommended for beginners.)

Order #5304	4 oz. jar	\$6.90
Order #5308	8 oz. jar	\$9.60
Order #5316	16 oz. jar	\$13.75
Order #5332	32 oz. jar	\$21.60

CLEAR GLAZING MEDIUM

#JS-308 8 oz.\$7.20

CRACKLE MEDIUM

#JS-310 8 oz.\$7.20

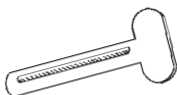
Jo Sonja's Texturing Paste

#JS-780 11 fluid oz\$6.25

PAINT SAVER KEYS

Ideal way to economize on the rising cost of art supplies.

Order #PK-2 6 for \$1.75



"LIQUIN" ALKYD PAINTING MEDIUM

Durable, non-yellowing alkyd and oil painting medium containing an alkyd resin. Speeds drying time and improves brushing qualities. Excellent for glazing and the production of fine detail.

Order #	Size	Price
3222991	75ml (2.5 oz)	\$7.50
3240991	250ml (8.4 oz)	14.80
3250991	500ml (16.8 oz)	25.35
3254991	1 liter (33.8 oz)	43.75

PLASTIC PAINT JARS

Ideal for storing special mixed colors for later use. Holds 1 oz.

Order #V-2501 10 for \$4.18



FILLERS & PUTTY

MIRACLE WOOD

Made of real wood. Dries as hard as wood and does not shrink. This filler will accept a burning tool on low heat.

#MW-901 4 oz.\$3.75
#MW-902 8 oz.\$5.40



TUF-CARVE

A plastic repair & build-up material that sands to a feather edge and is also carveable. Will not accept a burn. Mixes with a catalyst (included - 1oz tube, 100 to 1 mixing ration.)

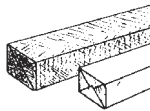
#5321 32oz \$21.75
#5321-X Catalyst - 1oz \$ 3.30



EPOXY BOND PUTTY

Two 2" sticks of "plumbers putty" used for making eyelids. Mix 1:1 ratio. Hardens in about 1 1/2 hours. Can be painted. White

#54010 \$3.50



KULIS KARVIT

Two part epoxy that has the consistency of putty but when cured can be sanded, burned, carved, and etched. Can be feathered to a very thin layer but will not crack. Use to set eyes, create fleshy eye ring or eyelids, or make nostrils. Water soluble, burnable, and nonshrinking. Two equal 4 oz. containers in 8 oz. kit. Sets up in 30 minutes.

#KK-4 \$9.95



H.B. Fuller Company

**COLOR:
NATURAL**

A+B EPOXY PUTTY

WARNING: May cause irritation or burns to eyes, skin and throat. Avoid contact with sensitive areas. Wash thoroughly with soap and water. If you experience difficulty breathing, call your doctor. Do not use if you are pregnant or nursing.

A & B EPOXY PUTTY

Use for setting eyes, making eyelids, sculpting feet, and as a wood filler. 2 bars, mix equal parts. 15.5 oz.

Order #AB9900 \$13.95

QUIKWOOD® EPOXY WOOD REPAIR PUTTY

Textures well, nonflammable, can be worked with water. 20-minute work life. Hardens in 45 minutes. 2 oz. tube.

#QUIK \$7.95